



QUALITY CONTROL SOLUTION

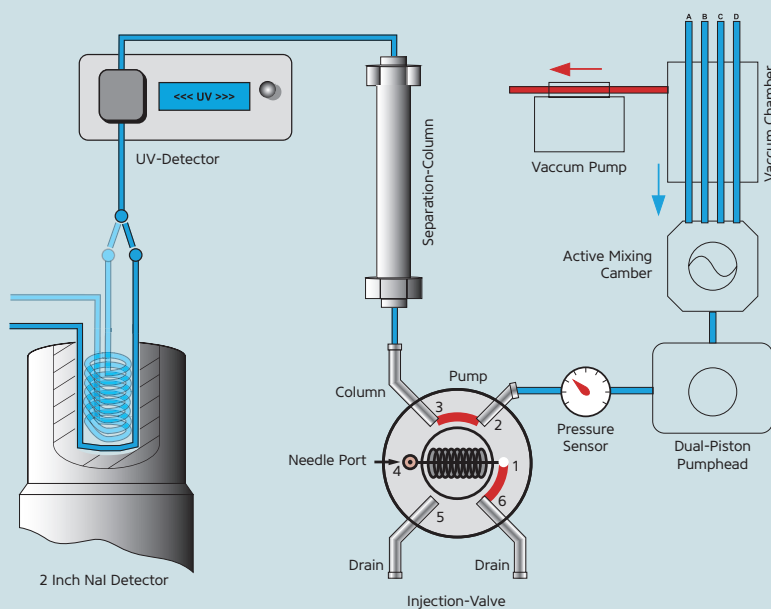
Fully integrated Radio-HPLC for quality control of radiopharmaceuticals

Fully integrated HPLC configuration for radiopharmaceutical analysis: For research and GMP-compliant quality control

The Quality Control Solution radio-HPLC is a state-of-the-art configuration for the analysis of radiolabeled targeting molecules according to Ph. Eur./USP standards.

With an integrated quaternary HPLC pump, UV/VIS and radio detectors, together with the latest Chromstar workstation, the Quality Control Solution is a first-in-class radio-HPLC technology in an extremely compact design.

The central unit is equipped with a heating section and a fully shielded column compartment. These features provide excellent reproducibility and simplified handling of radioactivity according to ALARA principle.



The integration of only high quality materials and components allow reliable and reproducible radioanalysis.

2 inch gamma detector is a key element of the radio-HPLC. In order to reach high efficient gamma ray detection, the measurement loop is surrounded by the NaI crystal.

Set of inlets on the front panel allow to easily switching to different measurement loops (5, 20 and 50 μ l) depending on the sensitivity required.

Sharing the expertise, providing excellent service

Together with the radio-HPLC, we provide our extensive expertise in the field of radiopharmaceutical manufacturing. Additionally we offer a full installation, qualification and full service package. Our service includes personalized hands-on training, troubleshooting and maintenance, along with method optimization and validation.

In addition our standard delivery already contains all components needed for full operation, such

as glass bottles for solvents, filters, RP-column, tubings and important spare parts including the tools and micro syringe for manual injection.

Upon request the standard configuration can be upgraded or modified according to your specific requirements (e.g. autosampler, column switching valve, different detectors).

KEY ADVANTAGES

- Stand alone, fully integrated system
- Half-life correction
- Built-in, fully shielded radiodetector and column
- Adjustable sensitivity for different radioisotopes

Take advantage of our one-stop-shop offering: Get all components and services from one supplier!



Radioisotopes +
Targeting Molecules



iQS® Ga-68 Fluidic
Labeling Module

iQS-Theranostics
Synthesizer



Reagent Sets + Cassettes



Quality Control Solution

PRECISELY FOR ME.



S 3700 γ -DETECTOR UNIT

Half-life correction	Online correction
Material	PEEK; PFA
Detector	2 x 2" NaI(Tl) pinhole
Shielding	40 mm Pb equivalent
Energy range	0.02 – 1.2 MeV
Background noise	40 cpm
Dynamic range	0 – 400.000 cps
Flow cells	Variable 5, 20 and 50 μ l by fitting setting
Column cabinet	Integrated with lead shielding 25 mm Pb-equivalent
Injection valve	Integrated
Data output	Digital, pulse counting
Column selection valve	Optional
Weight	38kg
Dimensions	396 x 165 x 478 mm
Power supply	100 – 250 V (47 – 63Hz)
Column oven	up to 70°C, fully shielded

S 1125 HPLC PUMP SYSTEM

Material	Stainless steel/PEEK*, Teflon AF®, PVDF, ceramics, sapphire, ruby
Flow rate	Adjustable Micro: 0.001 – 2.000 ml/min Analytical: 0.001 – 10.000 ml/min
Flow accuracy	\pm 1.0 % 1.000 ml/min
Flow precision	\pm 0.1 % RSD 1.000 ml/min
Pressure range	0 – 40 MPa (0 – 6000 PSI)
Pressure pulsation	Typically < 0.1 MPa or < 1.0 %
Compressibility compensation	integrated
Dimensions	310 x 165 x 478 mm
Weight	11 kg
Power supply	100 – 250 ~V (47 – 63 Hz)

* Depending on design

S 3245 UV/VIS DETECTOR

Material	Stainless steel/PEEK*
Baseline noise	\pm 1 x 10 ⁻⁵ AU (@240 nm, 1 sec risetime)
Baseline drift	2 x 10 ⁻⁴ AU/h
Wavelength range	190 – 900 nm
Wavelength accuracy	\pm 2 nm
Linearity	> 2.0 AU
Light source	Deuterium lamp, tungsten lamp
Wavelength program	Adjustable in 10 steps
Analogue output	1x 1 V (optional: 2x 1 V)
Additional features	Peak detector with +24V switch contact for magnetic valve
Dimensions	396 x 165 x 478 mm
Weight	11 kg
Power supply	100 – 250 ~V (47 – 63 Hz)

* Depending on configuration

About the ITM Group

ITM, a radiopharmaceutical biotech company, is dedicated to providing the most precise cancer radiotherapeutics and diagnostics to meet the needs of patients, clinicians and our partners through excellence in development, production and global supply. With patient benefit as the driving principle for all we do, ITM is advancing a broad pipeline combining its superior radioisotopes with targeting molecules to create precision oncology treatments. ITM is leveraging its leadership and nearly two decades of radiopharma expertise combined with its worldwide network to enable nuclear medicine to reach its full potential for helping patients live longer and better.

Your contact:

Phone: +49 89 329 8986-6000
 Email: info@itm-radiopharma.com
 Web: www.itm-radiopharma.com
 ITM Isotope Technologies Munich SE
 Lichtenbergstrasse 1
 85748 Garching/Munich, Germany

Produced by
ITM Medical Isotopes GmbH.

A company
 of the ITM Group.

